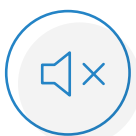


## Wellington ECR 2 Airflow Curves

---



**Silent**



**Efficient**



**Easy to Use**



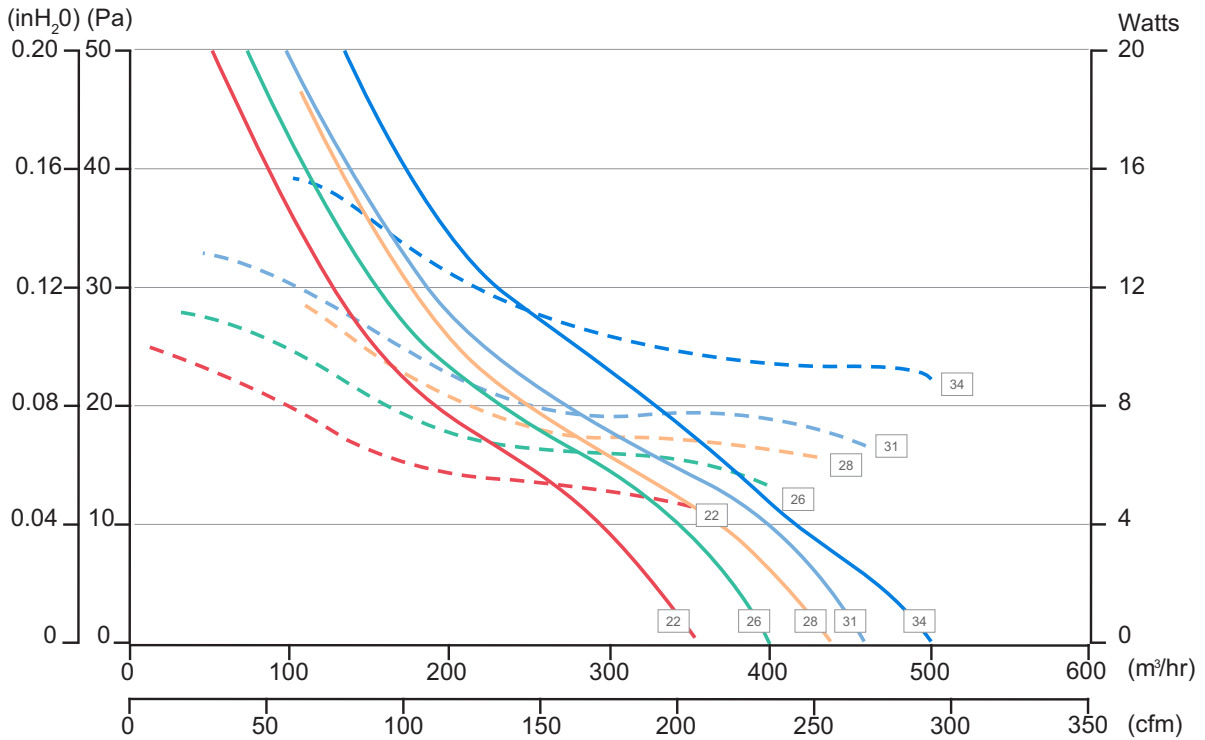
**Dual Voltage**



**Smart Control**



## 200mm (8 inches) at 1300rpm



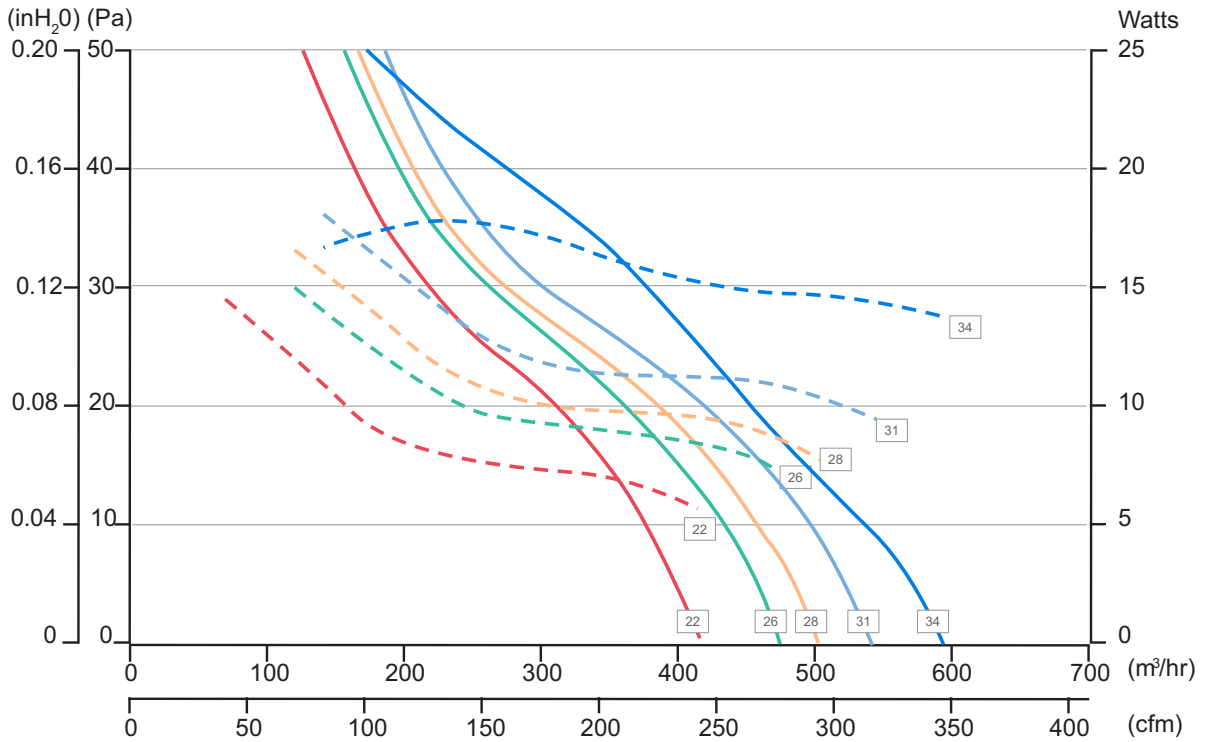
0 Pa (0 inH <sub>2</sub> O)													
Pitch	10°	12°	14°	16°	18°	20°	22°	24°	26°	28°	30°	32°	34°
Airflow [m <sup>3</sup> /hr]							351		401	437		462	503
Airflow [cfm]							207		236	257		272	296
Input Power [W]							4.5		5.3	6.2		6.7	9.0

25 Pa (0.1 inH <sub>2</sub> O)													
Pitch	10°	12°	14°	16°	18°	20°	22°	24°	26°	28°	30°	32°	34°
Airflow [m <sup>3</sup> /hr]							151		180	207		212	280
Airflow [cfm]							89		106	121		125	165
Input Power [W]							6.6		7.5	8.1		8.7	10.5

50 Pa (0.2 inH <sub>2</sub> O)													
Pitch	10°	12°	14°	16°	18°	20°	22°	24°	26°	28°	30°	32°	34°
Airflow [m <sup>3</sup> /hr]							47		70	n/a		92	130
Airflow [cfm]							28		41	n/a		54	78
Input Power [W]							9.4		10.6	n/a		12.3	7.1



## 200mm (8 inches) at 1550rpm



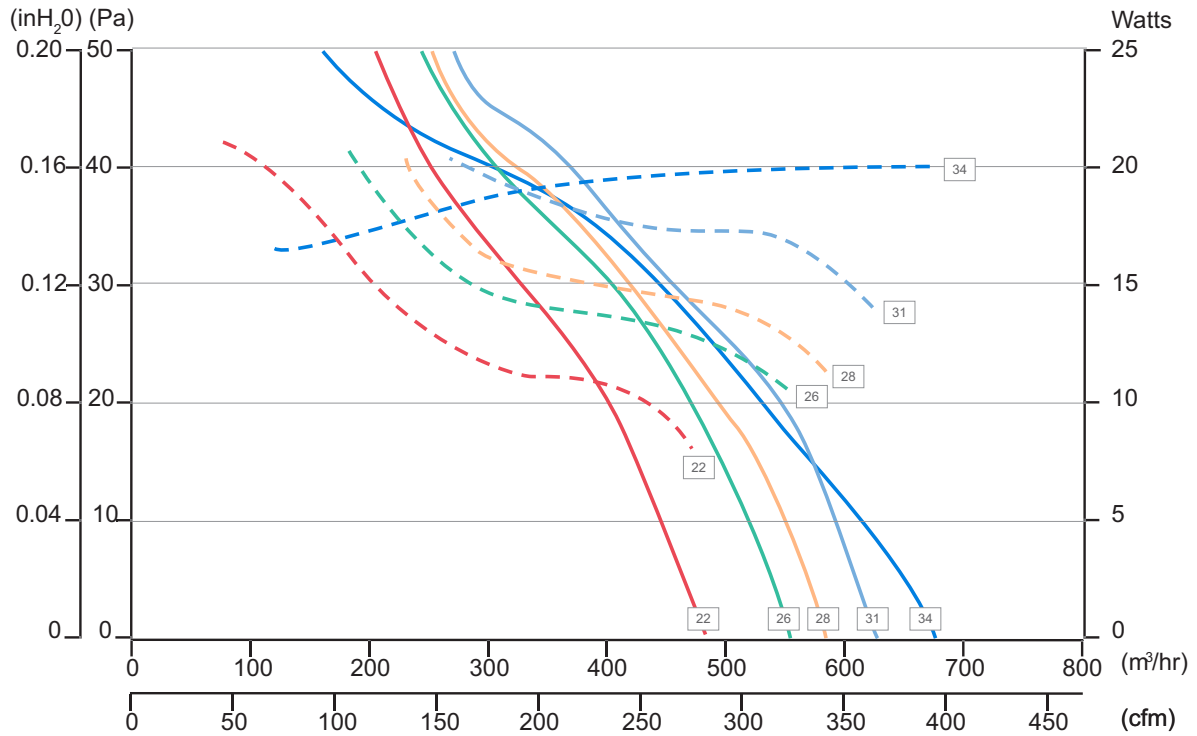
0 Pa (0 inH <sub>2</sub> O)													
Pitch	10°	12°	14°	16°	18°	20°	22°	24°	26°	28°	30°	32°	34°
Airflow [m <sup>3</sup> /hr]							414		475	502		544	595
Airflow [cfm]							244		279	296		320	350
Input Power [W]							5.5		7.1	7.8		9.3	13.5

25 Pa (0.1 inH <sub>2</sub> O)													
Pitch	10°	12°	14°	16°	18°	20°	22°	24°	26°	28°	30°	32°	34°
Airflow [m <sup>3</sup> /hr]							274		321	338		369	412
Airflow [cfm]							161		189	199		216	243
Input Power [W]							7.5		9.1	11.4		11.4	15.3

50 Pa (0.2 inH <sub>2</sub> O)													
Pitch	10°	12°	14°	16°	18°	20°	22°	24°	26°	28°	30°	32°	34°
Airflow [m <sup>3</sup> /hr]							122		153	163		180	165
Airflow [cfm]							72		90	96		106	97
Input Power [W]							11.2		13.3	14.4		16.2	17



## 200mm (8 inches) at 1800rpm



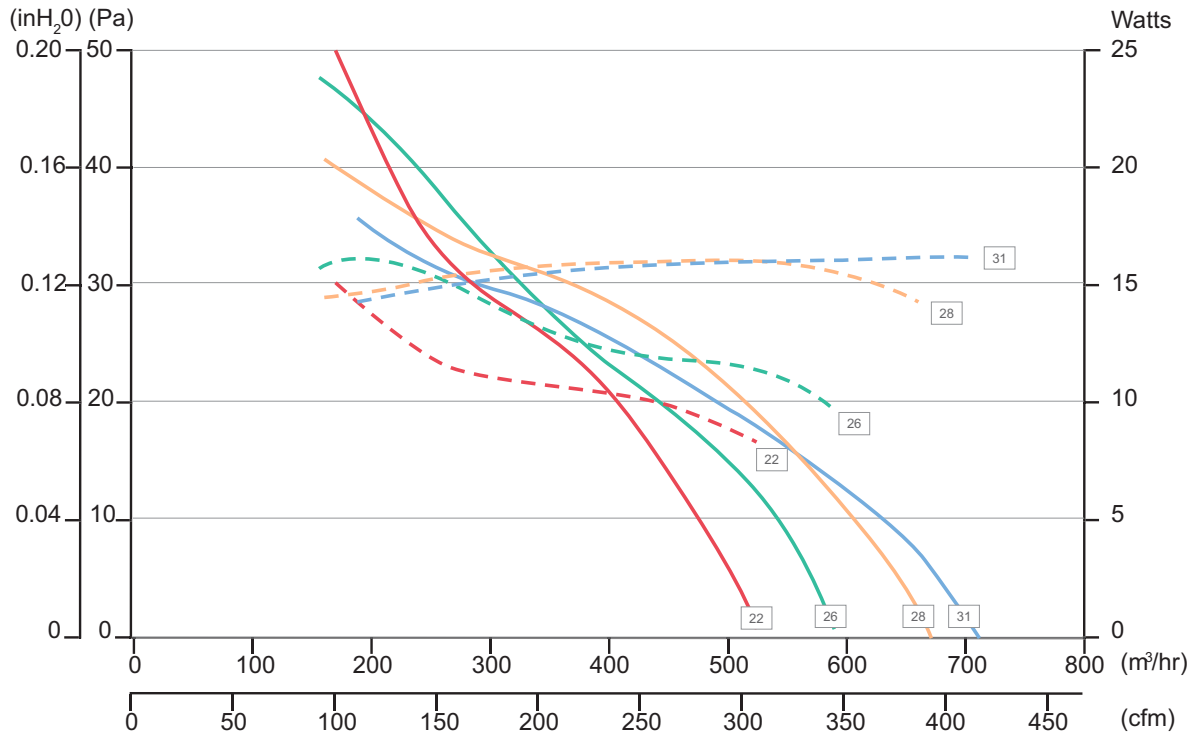
0 Pa (0 inH <sub>2</sub> O)													
Pitch	10°	12°	14°	16°	18°	20°	22°	24°	26°	28°	30°	32°	34°
Airflow [m <sup>3</sup> /hr]							481		554	585		627	676
Airflow [cfm]							283		326	345		369	398
Input Power [W]							7.9		10.4	11.3		14.1	20.0

25 Pa (0.1 inH <sub>2</sub> O)													
Pitch	10°	12°	14°	16°	18°	20°	22°	24°	26°	28°	30°	32°	34°
Airflow [m <sup>3</sup> /hr]							360		439	453		506	487
Airflow [cfm]							211		264	267		298	287
Input Power [W]							10.9		13.4	14.3		17.3	20.0

50 Pa (0.2 inH <sub>2</sub> O)													
Pitch	10°	12°	14°	16°	18°	20°	22°	24°	26°	28°	30°	32°	34°
Airflow [m <sup>3</sup> /hr]							200		235	255		265	173
Airflow [cfm]							118		138	150		156	102
Input Power [W]							15.1		17.0	18.4		20.2	17



## 230mm (9 inches) at 1300rpm



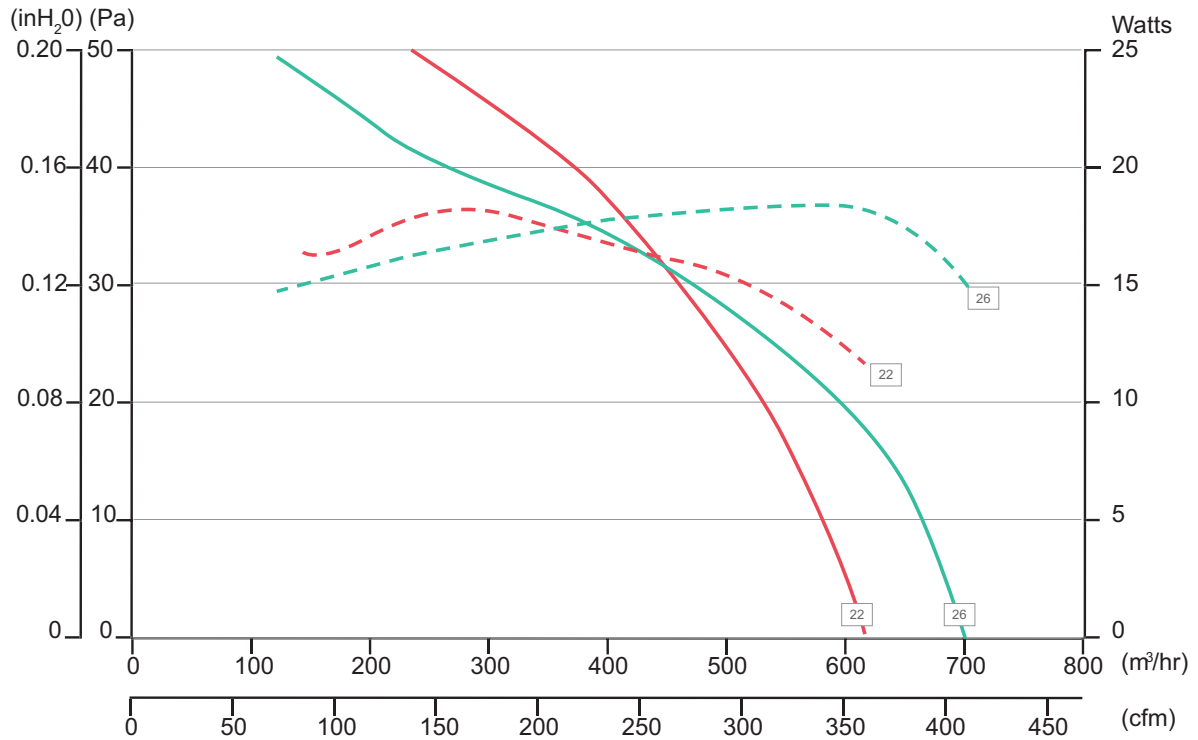
0 Pa (0 inH <sub>2</sub> O)													
Pitch	10°	12°	14°	16°	18°	20°	22°	24°	26°	28°	30°	32°	34°
Airflow [m <sup>3</sup> /hr]							527		592	670		714	670
Airflow [cfm]							310		349	395		420	395
Input Power [W]							8.3		9.6	14.2		16.1	15.7

25 Pa (0.1 inH <sub>2</sub> O)													
Pitch	10°	12°	14°	16°	18°	20°	22°	24°	26°	28°	30°	32°	34°
Airflow [m <sup>3</sup> /hr]							362		393	446		394	363
Airflow [cfm]							223		232	263		232	214
Input Power [W]							10.9		12.9	15.9		15.7	14.9

50 Pa (0.2 inH <sub>2</sub> O)													
Pitch	10°	12°	14°	16°	18°	20°	22°	24°	26°	28°	30°	32°	34°
Airflow [m <sup>3</sup> /hr]							168		113	n/a		n/a	n/a
Airflow [cfm]							99		66	n/a		n/a	n/a
Input Power [W]							15.0		15.0	n/a		n/a	n/a



## 230mm (9 inches) at 1550rpm



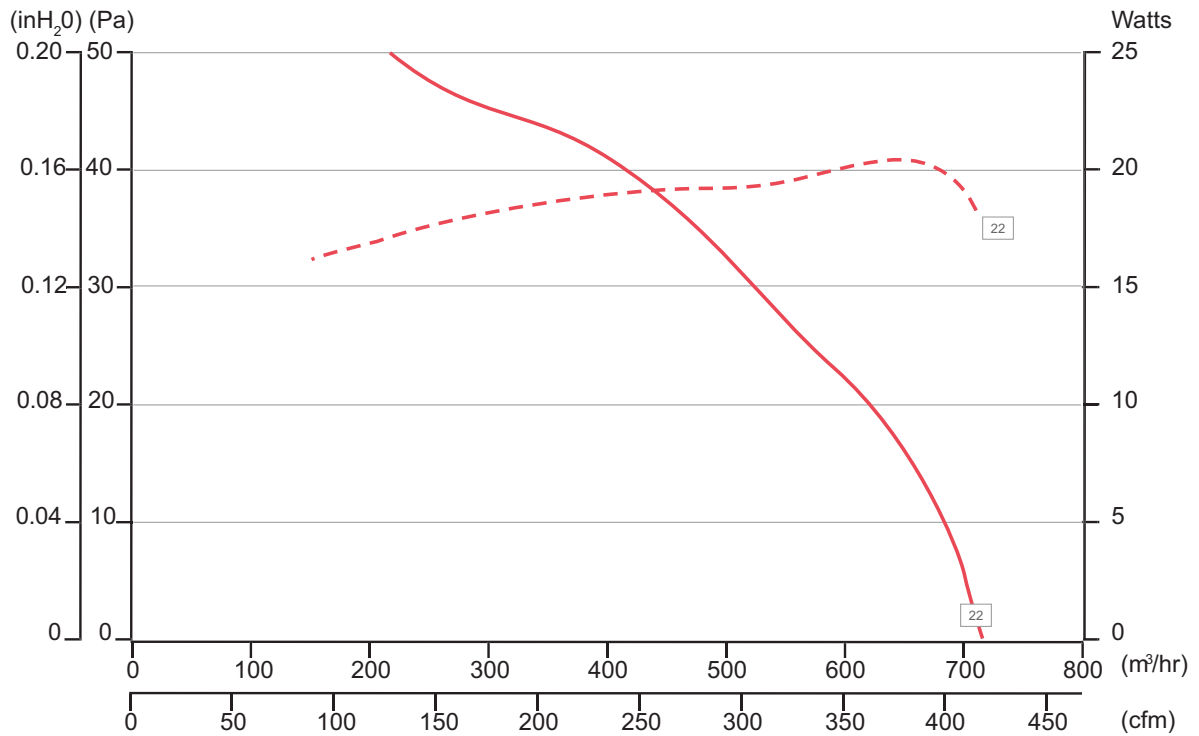
0 Pa (0 inH <sub>2</sub> O)													
Pitch	10°	12°	14°	16°	18°	20°	22°	24°	26°	28°	30°	32°	34°
Airflow [m <sup>3</sup> /hr]							617		699				
Airflow [cfm]							363		412				
Input Power [W]							11.6		14.9				

25 Pa (0.1 inH <sub>2</sub> O)													
Pitch	10°	12°	14°	16°	18°	20°	22°	24°	26°	28°	30°	32°	34°
Airflow [m <sup>3</sup> /hr]							501		533				
Airflow [cfm]							295		314				
Input Power [W]							15.7		18.2				

50 Pa (0.2 inH <sub>2</sub> O)													
Pitch	10°	12°	14°	16°	18°	20°	22°	24°	26°	28°	30°	32°	34°
Airflow [m <sup>3</sup> /hr]							237		121				
Airflow [cfm]							140		71				
Input Power [W]							17.6		14.8				



## 230mm (9 inches) at 1800rpm



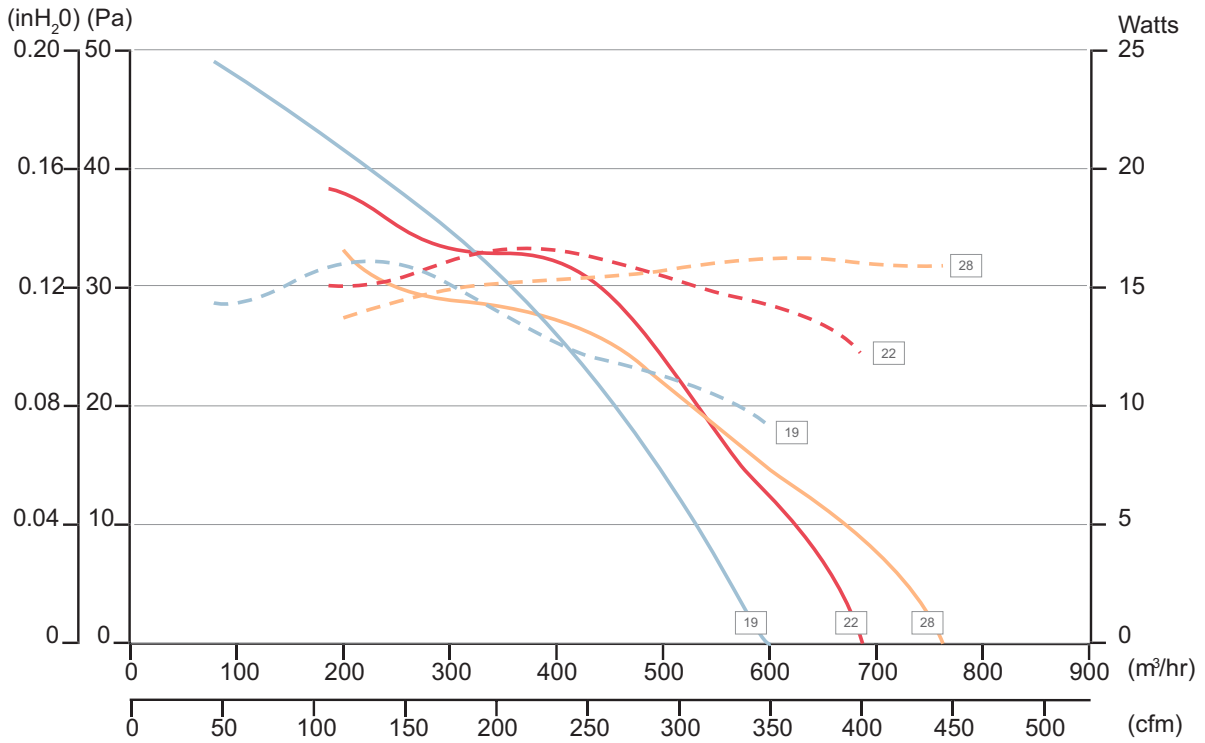
0 Pa (0 inH <sub>2</sub> O)													
Pitch	10°	12°	14°	16°	18°	20°	22°	24°	26°	28°	30°	32°	34°
Airflow [m <sup>3</sup> /hr]							715						
Airflow [cfm]							421						
Input Power [W]							18.0						

25 Pa (0.1 inH <sub>2</sub> O)													
Pitch	10°	12°	14°	16°	18°	20°	22°	24°	26°	28°	30°	32°	34°
Airflow [m <sup>3</sup> /hr]							574						
Airflow [cfm]							338						
Input Power [W]							19.6						

50 Pa (0.2 inH <sub>2</sub> O)													
Pitch	10°	12°	14°	16°	18°	20°	22°	24°	26°	28°	30°	32°	34°
Airflow [m <sup>3</sup> /hr]							204						
Airflow [cfm]							120						
Input Power [W]							17.0						



## 254mm (10 inches) at 1300rpm



0 Pa (0 inH <sub>2</sub> O)													
Pitch	10°	12°	14°	16°	18°	19°	22°	24°	26°	28°	30°	32°	34°
Airflow [m <sup>3</sup> /hr]						602	690			765			
Airflow [cfm]						355	406			451			
Input Power [W]						9.1	12.3			15.9			

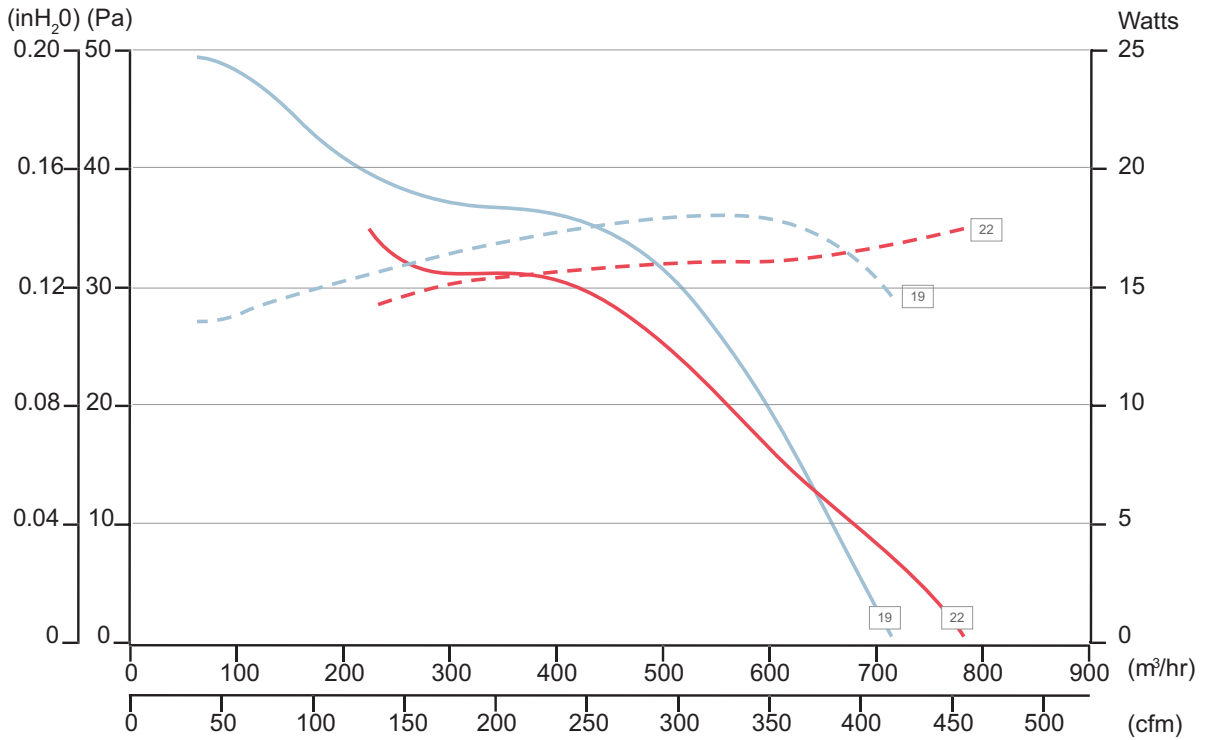
25 Pa (0.1 inH <sub>2</sub> O)													
Pitch	10°	12°	14°	16°	18°	19°	22°	24°	26°	28°	30°	32°	34°
Airflow [m <sup>3</sup> /hr]						417	491			460			
Airflow [cfm]						245	289			271			
Input Power [W]						12.7	15.6			15.4			

50 Pa (0.2 inH <sub>2</sub> O)													
Pitch	10°	12°	14°	16°	18°	19°	22°	24°	26°	28°	30°	32°	34°
Airflow [m <sup>3</sup> /hr]						77	n/a			n/a			
Airflow [cfm]						45	n/a			n/a			
Input Power [W]						14.3	n/a			n/a			





## 254mm (10 inches) at 1550rpm



0 Pa (0 inH <sub>2</sub> O)													
Pitch	10°	12°	14°	16°	18°	19°	22°	24°	26°	28°	30°	32°	34°
Airflow [m <sup>3</sup> /hr]						716	783						
Airflow [cfm]						423	461						
Input Power [W]						14.8	17.4						

25 Pa (0.1 inH <sub>2</sub> O)													
Pitch	10°	12°	14°	16°	18°	19°	22°	24°	26°	28°	30°	32°	34°
Airflow [m <sup>3</sup> /hr]						554	505						
Airflow [cfm]						326	296						
Input Power [W]						17.7	16.0						

50 Pa (0.2 inH <sub>2</sub> O)													
Pitch	10°	12°	14°	16°	18°	19°	22°	24°	26°	28°	30°	32°	34°
Airflow [m <sup>3</sup> /hr]						61.6	n/a						
Airflow [cfm]						36.2	n/a						
Input Power [W]						13.6	n/a						



# About AoFrio

---

AoFrio specialises in advanced refrigeration controls and energy saving EC fan motors for the commercial refrigeration industry. We are a listed New Zealand company, with offices and distributors globally. Our ECR Series fan motors have been market leaders for over a decade.

©2022 AoFrio Limited.

WT8588\_i3 04/20

Trademarks are (as applicable) 'TM' and © of AoFrio Limited. While all information in this document is believed by AoFrio Limited to be accurate and reliable, AoFrio Limited and its subsidiaries and affiliates and their directors, officers and employees are not responsible for any errors or omissions of any kind whatsoever, and to the maximum extent permitted at law, have no liability in tort, contract, or otherwise to any user and/or any third party.

E: [info@aofrio.com](mailto:info@aofrio.com) [www.aofrio.com](http://www.aofrio.com)